

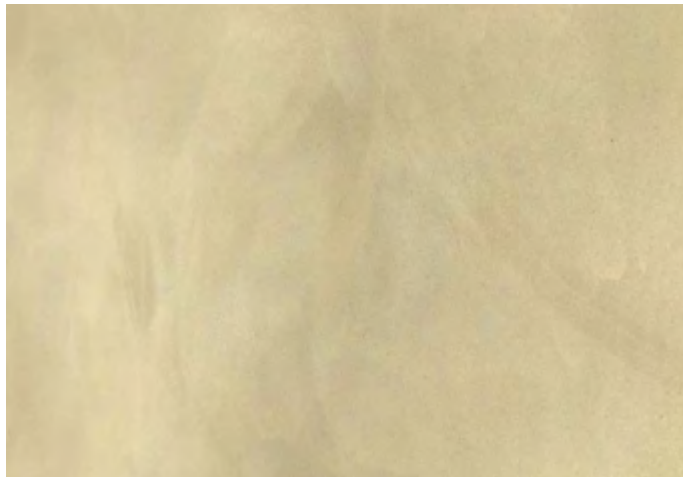


# DURACEM CONCRETE DESIGN FLOORS




## COMPOSITION

Duracem is a biopolymer based flooring up to 50% recycled material being used. The Duracem has a monolithic concrete look by using recycled material. Duracem has a Declare Red List Free label.



## CURE TROUGH

Duracem is walkable 24 hours after the installation. The complete chemical and mechanical properties will be achieved after 7 days of curing at a minimum temperature of 15°C.

## MAINTENANCE

Regular removal of dust and if necessary wet cleaning with a neutral cleaning agent. For further instructions see the maintenance instruction guide.

## INSTALLATION

The concrete or screed subfloor has to be primed and levelled with a self levelling smoothing compound to obtain a flat and levelled surface. Uneven surfaces have to be leveled by e.g. diamond grinding prior to the levelling compound.

All dust and loose parts have to be fully removed from all surfaces before the product is applied, preferably using a brush and/or industrial vacuum cleaner. Prior to the installation of the Duracem a suitable primer needs to be applied. During the installation the room temperature needs to be at least 62 °F. The floor temperature need to be at least 59 °F and minimum 3 °F above the dew point.

## APPLICATION

Duracem is a tough, flexible seamless comfortable floor covering. Duracem can be used as a seamless decorative floor covering in the education sector, medical sector, offices, museums, but is also suitable for domestic surfaces. In short Duracem is a perfect solution for floors where the owners and users have a high demand on comfort, wear and impact resistance and hygiene. Duracem is a seamless solution from wall to wall. It's a great alternative to hard concrete look finishes.

## APPEARANCE

Duracem has an unique look which is being determined by the recycled material inside. The Duracem has 12 different concrete looks. It is finished with a matt look. Duracem is tough-elastic and shows a perfect resistance to the signs of use. After cure through Duracem is resistant to a wide range of chemicals, acids, leys, resins, solvents and foodstuff. Duracem is seamless and liquid tight. The majority of the ingredients in Duracem are renewable resources. Duracem is free of plasticizers. Duracem is easy maintainable.

## LAYER THICKNESS

2 to 2,5mm.

## CLASSIFICATION

**CLASS 23 DOMESTIC HEAVY**  
Minimum thickness 2 mm

**CLASS 34 COMMERCIAL VERY HEAVY**  
Minimum thickness 2 mm

**CLASS 43 INDUSTRIAL HEAVY**  
Minimum thickness 2 mm

## TECHNICAL DATA

**RESISTANCE TO INDENTATION**  
EN ISO 24343-1 • 0.03 mm • ASTM F-1914 • 0.001inch / 750 PSI

**EFFECT OF A FURNITURE LEG**  
EN 424 • No damage • Static Load Limit: exceeds 1000 PSI when tested in accordance ASTM F-970-00

**ABRASION RESISTANCE**  
ASTM D4060 -14 • CS17 • Wheels/10N/1500 cycles • 55 mg

**ELECTRICAL BEHAVIOR**  
EN 1815 • < 2 kV

**LIGHTFASTNESS**  
EN ISO 105-B02 • 7 - 8 • ASTM F-1515 • 7 - 8 (1-Severe change, 8-No change)

**FLEXIBILITY**  
EN 435 • 20 mm, no cracking • ASTM F-137-08 • 0.79 inch, no cracking

**RESISTANCE TO CHEMICALS**  
EN ISO 26987 • No changes • Passes in accordance with ASTM F-925 • No change

**STAINING RESISTANCE**  
EN 423 • Category 1+2: level 5, Category 3: level 4/5

**CIGARETTE RESISTANCE**  
EN 1399 • Proc A (stubbed out) ≥ level 4 • Proc B (burning) ≥ level 3

**THERMAL CONDUCTIVITY**  
EN ISO 12524 • 0.15 W/m.K, suitable for underfloor heating • ASTM C-518-17 • 0.15 W/m.K

**THICKNESS SWELLING**  
EN 13329 • < 0.8%

**SUITABILITY FOR USE IN INCIDENTAL HUMID CONDITIONS**  
EN 426 • Suitable

**CE NUMBER**  
16 • DoP08COR0017 • EN 13813:2002

**DURACEM CONCRETE DESIGN FLOORS**  
Contains recycled content

**REACTION TO FIRE** EN 13501-1 • Bfl-S1 • Class 1 when tested in accordance with ASTM E-648 Critical Radiant Flux  
• Meets 450 or less, when tested in accordance with ASTM 662/ NFPA 258 Smoke Density

**CASTOR CHAIR CONTINUOUS USE** EN 425 • 25.000 • Slight change in appearance • no delamination • ASTM D-6962 • 25.000 • slight change • no delamination

**SLIP RESISTANCE** DIN 51130 • R9 standard / R11 upon request • EN 13893 • DS: ≥ 0.30 • Meets or exceeds the industry recommendation of >0.5 for flat surfaces when tested in accordance with ASTM D-2047



WANT TO  
KNOW MORE  
ABOUT THE  
PRODUCT?  
CLICK HERE!

